

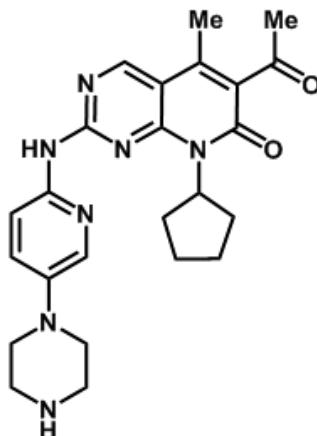
# PRODUCT INFORMATION

## IBRANCE<sup>®</sup> (palbociclib)

### NAME OF THE MEDICINES

Australian Approved Name (AAN): Palbociclib

Chemical Structure:



Chemical Name: 6-acetyl-8-cyclopentyl-5-methyl-2-{{[5-(piperazin-1-yl)pyridin-2-yl]amino}}pyrido[2,3-*d*]pyrimidin-7(8*H*)-one

Molecular Formula: C<sub>24</sub>H<sub>29</sub>N<sub>7</sub>O<sub>2</sub>

Molecular Weight: 447.54 Daltons

CAS Registry: 571190-30-2

### DESCRIPTION

Palbociclib is a yellow to orange powder with a pKa of 7.4 (secondary piperazine nitrogen) and 3.9 (pyridine nitrogen). The solubility of palbociclib in aqueous media decreases over the range pH 4.3 to pH 9.0 from greater than 0.7 mg/mL to less than 0.002 mg/mL. At or below pH 4, palbociclib behaves like a high-solubility compound. Above pH 4, the solubility of the drug substance reduces significantly. The partition coefficient (1-octanol /water) at pH 7.4 is 0.99.

IBRANCE is supplied as hard gelatin capsules containing 75 mg, 100 mg or 125 mg of palbociclib as the freebase and the following excipients: microcrystalline cellulose, lactose monohydrate, sodium starch glycolate, silicon dioxide and magnesium stearate. The capsules are opaque and are differentiated by size, colour and printing. The capsule shells contain gelatin, iron oxide red, iron oxide yellow and titanium dioxide and are printed with Opacode S-1-7085 white printing ink. The capsule shells consist of a light orange body/light orange cap (75 mg), a light orange body/caramel cap (100 mg) and a caramel body/caramel cap (125 mg).

## PHARMACOLOGY

### Mechanism of Action

Palbociclib is a small molecule inhibitor of cyclin-dependent kinases (CDK) 4 and 6. Cyclin D1 and CDK4/6 are downstream of multiple signalling pathways which lead to cellular proliferation.

### Pharmacodynamics

Through inhibition of CDK4/6, palbociclib reduced cellular proliferation by blocking progression of the cell from G1 into S phase of the cell cycle. Testing of palbociclib in a panel of molecularly profiled breast cancer cell lines revealed high efficacy against luminal breast cancers, particularly oestrogen receptor (ER)-positive breast cancers. Mechanistic analyses revealed that the combination of palbociclib with anti-oestrogen agents enhanced the re-activation of retinoblastoma (Rb) through inhibition of Rb phosphorylation resulting in reduced E2F signalling and growth arrest.

The enhanced growth arrest of the ER-positive breast cancer cell lines treated with palbociclib and anti-oestrogen agents is accompanied by increased cell senescence resulting in a sustained cell cycle arrest following drug removal and increased cell size associated with a senescent phenotype. In vivo studies using a patient-derived ER-positive breast cancer xenograft model (HBCx-34) demonstrated that the combination of palbociclib and letrozole further enhanced inhibition of Rb phosphorylation, downstream signalling and dose-dependent tumour growth. This supports the contribution of senescence-associated growth arrest as a mechanism associated with the antitumour efficacy of combined palbociclib/ER antagonist in ER-positive breast cancer models.

In the presence or absence of an anti-oestrogen, palbociclib-treated bone marrow cells did not become senescent and resumed proliferation following palbociclib withdrawal, consistent with pharmacologic quiescence. The in vitro breast cancer cells, conversely, became senescent following palbociclib or anti-oestrogen treatment with additive effects in combination and remained arrested in the presence of anti-oestrogen.

### Pharmacokinetics

The pharmacokinetics (PK) of palbociclib were characterised in patients with solid tumours including advanced breast cancer and in healthy volunteers.

#### *Absorption*

The mean time to  $C_{max}$  ( $T_{max}$ ) of palbociclib is generally between 4 to 8 hours following oral administration. The mean absolute bioavailability of palbociclib after an oral 125 mg dose is 46%. In the dosing range of 25 mg to 225 mg, the AUC and  $C_{max}$  increase proportionally with dose in general. Steady state was achieved within 8 days following repeated once daily dosing. With repeated once daily administration, palbociclib accumulates with a median accumulation ratio of 2.4 (range 1.5-4.2).

### *Food effect*

Palbociclib absorption and exposure were very low in approximately 13% of the population under the fasted condition. Food intake increased the palbociclib exposure in this small subset of the population, but did not alter palbociclib exposure in the rest of the population to a clinically relevant extent. Therefore, food intake reduced the intersubject variability of palbociclib exposure, which supports administration of IBRANCE with food.

Compared to palbociclib given under overnight fasted conditions, the  $AUC_{inf}$  and  $C_{max}$  of palbociclib increased by 21% and 38% when given with high-fat food, by 12% and 27% when given with low-fat food and by 13% and 24% when moderate-fat food was given 1 hour before and 2 hours after palbociclib dosing. In addition, food intake significantly reduced the intersubject and intrasubject variability of palbociclib exposure. Based on these results, palbociclib should be taken with food.

### *Gastric pH elevating medication effect*

In a healthy subject study, coadministration of a single 125 mg dose of palbociclib with multiple doses of the proton pump inhibitor (PPI) rabeprazole under fed conditions decreased palbociclib  $C_{max}$  by 41%, but had limited impact on  $AUC_{inf}$  (13% decrease), when compared to a single 125 mg dose of palbociclib administered alone. Given the reduced effect on gastric pH of H2 receptor antagonists and local antacids compared to PPIs, the effect of these classes of acid-reducing agents on palbociclib exposure under fed conditions is expected to be minimal. Under fed conditions there is no clinically relevant effect of PPIs, H2-receptor antagonists or local antacids on palbociclib exposure. In another healthy subject study, coadministration of a single 125 mg dose of IBRANCE with multiple doses of the PPI rabeprazole under fasted conditions decreased palbociclib  $AUC_{inf}$  and  $C_{max}$  by 62% and 80%, respectively, when compared with a single dose of IBRANCE administered alone.

### *Distribution*

Binding of palbociclib to human plasma proteins in vitro was ~85%, with no concentration dependence over the concentration range of 500 ng/mL to 5000 ng/mL. The geometric mean apparent volume of distribution ( $V_z/F$ ) was 2583 (26%) L.

### *Metabolism*

In vitro and in vivo studies indicate that palbociclib undergoes extensive hepatic metabolism in humans. Following oral administration of a single 125 mg dose of [ $^{14}C$ ]palbociclib to humans, the major primary metabolic pathways for palbociclib involved oxidation and sulfonation, with acylation and glucuronidation contributing as minor pathways. Palbociclib was the major circulating drug-derived entity in plasma. The major circulating metabolite was a glucuronide conjugate of palbociclib, although it only represented 1.5% of the administered dose in the excreta. The majority of the material was excreted as metabolites. In faeces, the sulfamic acid conjugate of palbociclib was the major drug-related component, accounting for 25.8% of the administered dose. In vitro studies with human hepatocytes, liver cytosolic and S9 fractions and recombinant sulfotransferase (SULT) enzymes indicated that CYP3A and SULT2A1 are mainly involved in the metabolism of palbociclib.

### ***Excretion***

The geometric mean apparent oral clearance (CL/F) of palbociclib was 63.08 L/h and the mean plasma elimination half-life was 28.8 hours in patients with advanced breast cancer. In 6 healthy male subjects given a single oral dose of [<sup>14</sup>C]palbociclib, a median of 91.6% of the total administered radioactive dose was recovered in 15 days; faeces (74.1% of dose) was the major route of excretion, with 17.5% of the dose recovered in urine. Excretion of unchanged palbociclib in faeces and urine was 2.3% and 6.9% of the administered dose, respectively.

### ***Special Populations***

Based on a population pharmacokinetic analysis in 183 patients with cancer (50 male and 133 female patients, age ranging from 22 to 89 years and body weight ranging from 37.9 to 123 kg), gender had no effect on the exposure of palbociclib and age and body weight had no clinically important effect on the exposure of palbociclib.

#### ***Elderly (≥65 years)***

Of 444 patients who received palbociclib in Study A5481008 (PALOMA-2), 181 patients (41%) were ≥65 years of age with 133 (30%) patients between the age of 65 and 74, and 48 (11%) patients ≥75 years of age. Of 347 patients who received palbociclib in Study A5481023 (PALOMA-3), 86 patients (25%) were ≥65 years of age with 59 (17%) patients between the age of 65 and 74, and 27 (8%) patients ≥75 years of age. No overall differences in safety were observed across all age groups and elderly age groups. Neutropenia was the most common adverse event with palbociclib across all age groups; however, the incidence of febrile neutropenia was low in all age groups. No overall differences effectiveness of palbociclib were observed between these patients and younger patients.

#### ***Children and Adolescents***

Pharmacokinetics of palbociclib have not been evaluated in patients ≤18 years of age.

#### ***Renal Impairment***

Based on a population pharmacokinetic analysis that included 183 patients with cancer, where 73 patients had mild renal impairment (60 mL/min ≤ CrCl <90 mL/min) and 29 patients had moderate renal impairment (30 mL/min ≤ CrCl <60 mL/min), mild and moderate renal impairment had no effect on the exposure of palbociclib. The pharmacokinetics of palbociclib have not been studied in patients with severe renal impairment.

#### ***Hepatic Impairment***

Based on a population pharmacokinetic analysis that included 183 patients with cancer, where 40 patients had mild hepatic impairment (total bilirubin ≤ ULN and AST > ULN or total bilirubin >1.0-1.5 × ULN and any AST), mild hepatic impairment had no effect on the exposure of palbociclib. The pharmacokinetics of palbociclib have not been studied in patients with moderate or severe hepatic impairment (total bilirubin >1.5 × ULN and any AST).

#### ***Asian race***

In a dedicated PK study in healthy volunteers, palbociclib geometric mean AUC<sub>inf</sub> and C<sub>max</sub> values were 30% and 35% higher, respectively, in Japanese subjects compared with non-Asian subjects after a single oral dose. However, this finding was not reproduced consistently

in subsequent studies in breast cancer patients after multiple dosing. Based on an analysis of the cumulative pharmacokinetic, safety and efficacy data, no dose adjustment based on Asian race is considered necessary.

### *Cardiac electrophysiology*

The effect of palbociclib on the QT interval corrected for heart rate (QTc) was evaluated using time-matched electrocardiograms (ECGs) evaluating the change from baseline and corresponding pharmacokinetic data in 77 patients with breast cancer. Palbociclib did not prolong QTc to any clinically relevant extent at the recommended dose of 125 mg daily (Schedule 3/1).

## **CLINICAL TRIALS**

### **Study A5481003: Randomised Phase 1/2 study of IBRANCE in combination with letrozole (PALOMA-1).**

The efficacy of palbociclib was evaluated in a randomised, open-label, multicentre study of palbociclib plus letrozole versus letrozole alone conducted in postmenopausal women with ER-positive, human epidermal growth factor receptor 2 (HER2)-negative locally advanced or metastatic breast cancer who did not receive previous systemic treatment for their advanced disease.

The study was comprised of a limited Phase 1 portion (N = 12), designed to confirm the safety and tolerability of the combination palbociclib plus letrozole, followed by a randomised Phase 2 portion (N = 165), designed to evaluate the efficacy and safety of palbociclib in combination with letrozole compared with letrozole alone in the first-line treatment of postmenopausal women with ER-positive, HER2-negative advanced breast cancer. Randomisation was stratified by disease site (visceral versus bone only versus other) and by disease-free interval (>12 months from the end of adjuvant treatment to disease recurrence versus ≤12 months from the end of adjuvant treatment to disease recurrence or de novo advanced disease).

The patient demographic and baseline characteristics were generally balanced between the study arms in terms of age, race, disease sites, stage and prior therapies.

The primary endpoint of the study was investigator-assessed progression-free survival (PFS) evaluated according to Response Evaluation Criteria in Solid Tumors (RECIST) version 1.0. The median PFS (mPFS) for patients in the palbociclib plus letrozole arm was 20.2 months (95% confidence interval [CI]: 13.8-27.5) and 10.2 months (95% CI: 5.7-12.6) for patients in the letrozole-alone arm. The observed hazard ratio (HR) was 0.488 (95% CI: 0.319-0.748) in favour of palbociclib plus letrozole, with a stratified log-rank test 1-sided p-value of 0.0004.

At the final overall survival (OS) analysis, the observed HR was 0.897 (95% CI: 0.623, 1.294) with a stratified 1-sided p-value of 0.2812. The median OS in the palbociclib plus letrozole arm was 37.5 months (95% CI: 31.4, 47.8) and in the letrozole alone arm was 34.5 months (95% CI: 27.4, 42.6).

The estimated survival probabilities at 12, 24, and 36 months between the 2 treatment arms were 89.0% versus 87.0%, 77.9% versus 71.1%, and 50.8% versus 47.4%, in favor of palbociclib plus letrozole, respectively.

**Study A5481008: Randomised, Phase 3 study of IBRANCE in combination with letrozole (PALOMA-2)**

The efficacy of palbociclib in combination with letrozole versus letrozole plus placebo was evaluated in an international, randomised, double-blind, placebo-controlled, parallel-group, multicentre study conducted in women with ER-positive, HER2-negative locally advanced or metastatic breast cancer who had not received prior systemic treatment for their advanced disease, whose disease was not amenable to resection or radiation therapy with curative intent, and for whom chemotherapy was not clinically indicated based on investigator's best medical judgement.

A total of 666 postmenopausal women were randomised 2:1 to either the palbociclib plus letrozole arm or to the placebo plus letrozole arm and were stratified by site of disease (visceral, non-visceral), disease-free interval from the end of (neo)adjuvant treatment to disease recurrence (de novo metastatic,  $\leq 12$  months from the end of adjuvant treatment to disease recurrence,  $>12$  months from the end of adjuvant treatment to disease recurrence) and by the type of prior (neo)adjuvant anticancer therapies (prior hormonal therapy, no prior hormonal therapy).

Patients continued to receive their assigned treatment until objective disease progression, symptomatic deterioration, unacceptable toxicity, death or withdrawal of consent, whichever occurred first. Crossover between treatment arms was not allowed.

Patients were well matched for baseline demographics and disease characteristics between the palbociclib plus letrozole arm and the placebo plus letrozole arm. The median age of patients enrolled in this study was 62 years (range 28-89). A detailed summary of the demographics and baseline characteristics are presented in Table 1.

**Table 1. Summary of Demographics and Baseline Disease Characteristics – PALOMA-2 Study (Intent-to-Treat Population)**

<b>Parameter</b>	<b>IBRANCE plus Letrozole (N = 444)</b>	<b>Placebo plus Letrozole (N = 222)</b>
Age (years)		
Median (Min, Max)	62 (30, 89)	61 (28, 88)
< 65 [n (%)]	263 (59.2)	141 (63.5)
≥ 65 [n (%)]	181 (40.8)	81 (36.5)
Race [n (%)]		
White	344 (77.5)	172 (77.5)
Black	8 (1.8)	3 (1.4)
Asian	65 (14.6)	30 (13.5)
ECOG Performance Status [n (%)]		
0	257 (57.9)	102 (45.9)
1	178 (40.1)	117 (52.7)
2	9 (2.0)	3 (1.4)
Disease site [n (%)]		
Visceral	214 (48.2)	110 (49.5)
Non-visceral	230 (51.8)	112 (50.5)
Measurable disease at baseline [n (%)]		
Yes	338 (76.1)	171 (77.0)
No	106 (23.9)	51 (23.0)
Disease-Free Interval [n (%)]		
>12 months since completion of prior (neo)adjuvant therapy	178 (40.1)	93 (41.9)
≤12 months since completion of prior (neo)adjuvant therapy	99 (22.3)	48 (21.6)
De novo advanced disease	167 (37.6)	81 (36.5)
Prior hormonal therapy use in (neo)adjuvant treatment [n (%)]		
Yes	249 (56.1)	126 (56.8)
No	195 (43.9)	96 (43.2)
Prior chemotherapy for primary diagnosis in (neo)adjuvant treatment [n (%)]		
Yes	213 (48.0)	109 (49.1)
No	231 (52.0)	113 (50.9)
Most recent hormonal therapy <sup>b</sup>		
Aromatase inhibitors	91 (36.5)	44 (34.9)
Anti-oestrogens	154 (61.8)	75 (59.5)
Other	4 (1.6)	7 (5.6)

Abbreviations: ECOG=Eastern Cooperative Oncology Group; Max=maximum; Min=minimum; N=number of patients; N / n=number of patients.

a: Race also includes 'Other: not reported/missing subjects'.

b: Aromatase inhibitors=anastrozole, letrozole or exemestane, Anti-oestrogens=tamoxifen, tamoxifen citrate, toremifene, toremifene citrate or fulvestrant; Other=not aromatase inhibitor and not anti-oestrogen.

The primary endpoint of the study was PFS evaluated according to RECIST version 1.1 as assessed by investigator. Secondary efficacy endpoints included objective response (OR), duration of response (DOR), clinical benefit response (CBR), overall survival (OS), safety, EQ-5D scores and health-related quality of life (QoL) assessed using the Functional Assessment of Cancer Therapy-Breast (FACT-B) questionnaire.

The study met its primary objective of improving PFS. The estimated HR was 0.576 (95% CI: 0.463, 0.718) in favour of palbociclib plus letrozole, with a stratified log-rank test 1-sided p-value of <0.000001. The mPFS for patients in the palbociclib plus letrozole arm was 24.8 months (95% CI: 22.1, Not estimable [NE]) and 14.5 months (95% CI: 12.9, 17.1) for patients in the placebo plus letrozole arm.

The treatment effect of the combination on PFS was also supported by an independent review of radiographs with an estimated HR of 0.653 (95% CI: 0.505, 0.844).

**Attachment 1: Product information for AusPAR Ibrance Palbociclib Pfizer Australia Pty Ltd PM-2016-01317-1-4 Final 30 April 2018. This Product Information was approved at the time this AusPAR was published.**

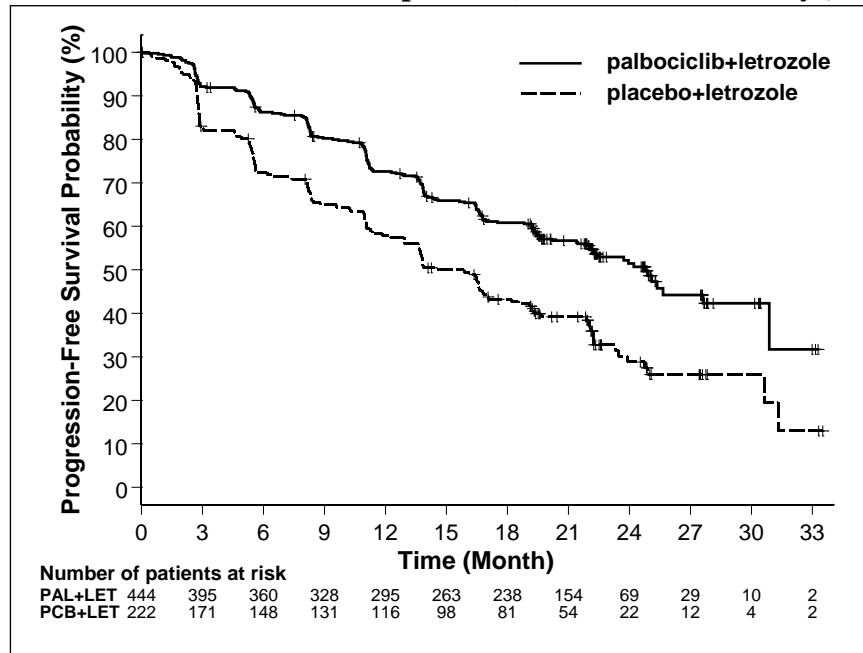
Efficacy data from the PALOMA-2 study are summarised in Table 2 and the Kaplan-Meier curve for PFS is shown in Figure 2.

**Table 2. Efficacy Results From PALOMA 2 Study (Intent-to-Treat Population) (26-Feb-2016 Cutoff)**

	<b>IBRANCE plus Letrozole (N = 444)</b>	<b>Placebo plus Letrozole (N = 222)</b>
<b>Median Progression-Free Survival [Months (95% CI)]</b>		
Investigator assessment	24.8 (22.1, NE)	14.5 (12.9, 17.1)
HR (95% CI) and 1-sided p-value	0.576 (0.463, 0.718), p<0.000001	
Independent radiographic review	30.5 (27.4, NE)	19.3 (16.4, 30.6)
HR (95% CI) and 1-sided p-value	0.653 (0.505, 0.844), p<0.000532	
<b>Secondary Efficacy Endpoints (Investigator Assessment)</b>		
ORR [% (95% CI)]	46.4 (41.7, 51.2)	38.3 (31.9, 45.0)
ORR (measurable disease) [% (95% CI)]	60.7 (55.2, 65.9)	49.1 (41.4, 56.9)
DOR (measurable disease) [months (95% CI)]	20.1 (19.3, 28.0)	16.7 (13.8, 22.5)
CBRR [% (95% CI)]	85.8 (82.2, 88.9)	71.2 (64.7, 77.0)

N=number of patients; CI=confidence interval; NE=not estimable; ORR=objective response rate; CBRR=clinical benefit response rate; DOR=duration of response.

**Figure 2. Kaplan-Meier Plot of Progression-Free Survival (Investigator Assessment, Intent-to-Treat Population) – PALOMA-2 Study (26-Feb-2016 cutoff)**



PAL=palbociclib; LET=letrozole; PCB=placebo.

A series of prespecified subgroup PFS analyses was performed based on baseline demographic and disease characteristics to investigate the internal consistency of treatment effect. A reduction in the risk of disease progression or death in the palbociclib plus letrozole arm was observed in all individual patient subgroups defined by stratification factors and



baseline characteristics. This was evident for patients with visceral metastases (HR of 0.67 [95% CI: 0.50, 0.89], mPFS: 19.2 versus 12.9 months) or without visceral metastases (HR of 0.48 [95% CI: 0.34, 0.67], mPFS: Not Reached [NR] versus 16.8 months) and patients with bone only disease (HR of 0.36 [95% CI: 0.22, 0.59], mPFS: NR versus 11.2 months) or without bone only disease (HR of 0.65 [95% CI: 0.51, 0.84], mPFS: 22.2 versus 14.5 months).

Patients with advanced, symptomatic visceral spread at risk of life-threatening complications in the short term were not included in PALOMA-2. Objective Response Rate (ORR) was higher in patients with visceral disease treated with palbociclib plus letrozole compared to placebo plus letrozole (58.9% [95% CI: 52.0, 65.5], versus 45.5% [95% CI: 35.9, 55.2], respectively), while in patients with non visceral metastases (n=342, of whom 151 had bone only disease) ORR was comparable between treatment groups (34.8% [95% CI: 28.6, 41.3], versus 31.3% [95% CI: 22.8, 40.7])

The overall survival (OS) data were not mature at the time of the final PFS analysis (20% of patients had died). Patients will continue to be followed for the final analysis.

An analysis of time-to-deterioration composite endpoint (TTD) in Functional Assessment of Cancer Therapy-Breast (FACT-B), defined as the time between baseline and first occurrence of decrease of  $\geq 7$  points in FACT-B scores, was carried out based on survival analysis methods using a Cox proportional hazards model and log-rank test. No statistically significant difference was observed in TTD in FACT-B total scores between the palbociclib plus letrozole arm and the placebo plus letrozole arm (HR of 1.042 [95% CI: 0.838, 1.295]; 1-sided p-value=0.663).

Pre- and perimenopausal women were not enrolled in PALOMA-1 or PALOMA-2.

### **Study A5481023: Randomised, Phase 3 study of IBRANCE in combination with fulvestrant (PALOMA-3)**

The efficacy of palbociclib in combination with fulvestrant versus placebo plus fulvestrant was evaluated in an international, randomised, double-blind, parallel-group, multicentre study conducted in women with HR-positive, HER2-negative locally advanced or metastatic breast cancer, regardless of their menopausal status, whose disease progressed after prior endocrine therapy and was not amenable to resection or radiation therapy with curative intent based on investigator's best medical judgement.

A total of 521 pre/postmenopausal women whose disease had progressed on or within 12 months after completion of adjuvant endocrine therapy or on or within 1 month from prior endocrine therapy for advanced disease were randomised 2:1 to the palbociclib plus fulvestrant arm or the placebo plus fulvestrant arm and stratified by documented sensitivity to prior hormonal therapy, menopausal status at study entry (pre/peri versus postmenopausal) and presence of visceral metastases. Crossover between treatment arms was not allowed.

Patients were balanced for baseline demographics and prognostic characteristics between the palbociclib plus fulvestrant arm and the placebo plus fulvestrant arm. The median age of patients enrolled in this study was 57 years (range 29, 88). The majority of patients in each treatment arm were White, had documented sensitivity to prior hormonal therapy and were postmenopausal. All patients had received prior systemic therapy and most patients in each treatment arm had received a previous chemotherapy regimen. More than half (62%) had an

ECOG performance status of 0, 60% had visceral metastases and 60% had received more than 1 prior hormonal regimen for their primary diagnosis.

**Table 3. Summary of Demographic and Baseline Characteristics by Treatment – PALOMA-3 Study (Intent-to-Treat Population)**

<b>Parameter</b>	<b>IBRANCE Plus Fulvestrant (N = 347)</b>	<b>Placebo Plus Fulvestrant (N = 174)</b>
Age (years)		
Median (Min, Max)	57 (30, 88)	56 (29, 80)
<65 [n (%)]	261 (75.2)	131 (75.3)
≥65 [n (%)]	86 (24.8)	43 (24.7)
Race <sup>a</sup>		
White	252 (72.6)	133 (76.4)
Asian	74 (21.3)	31 (17.8)
Black	12 (3.5)	8 (4.6)
ECOG performance status [n (%)]		
0	207 (59.7)	115 (66.1)
1	140 (40.3)	59 (33.9)
Documented sensitivity to prior hormonal therapy <sup>b</sup> [n (%)]		
Yes	274 (79.0)	136 (78.2)
No	73 (21.0)	38 (21.8)
Visceral metastases <sup>a</sup> [n (%)]		
Yes	206 (59.4)	105 (60.3)
No	141 (40.6)	69 (39.7)
Menopausal status <sup>b,c</sup> [n (%)]		
Pre/Peri <sup>d</sup>	72 (20.7)	36 (20.7)
Post	275 (79.3)	138 (79.3)
Prior systemic therapies [n (%)]		
No	0	0
Yes	347 (100)	174 (100)
Number of regimens		
1	71 (20.5)	39 (22.4)
2	106 (30.5)	56 (32.2)
3	98 (28.2)	35 (20.1)
>3	72 (20.7)	44 (25.3)
Previous chemotherapy regimen for primary diagnosis		
No	96 (27.7)	36 (20.7)
Yes	251 (72.3)	138 (79.3)
Prior hormonal regimen for primary diagnosis		
1	133 (38.3)	77 (44.3)
>1	214 (61.7)	97 (55.7)

Abbreviations: ECOG=Eastern Cooperative Oncology Group; Max=maximum; Min=minimum; N / n=number of patients.

- Race also included Other (9/521) and Unspecified (2/521)
- Based on the randomisation.
- Postmenopausal defined by at least 1 of the following criteria: 1) ≥60 years of age, 2) <60 years of age and cessation of regular menses for at least 12 consecutive months with no alternative pathological or physiological cause, and serum estradiol and follicle stimulating hormone (FSH) level within the laboratory's reference range for postmenopausal females; 3) documented bilateral oophorectomy; or 4) medically confirmed ovarian failure. Pre/perimenopausal defined as not meeting the criteria for being postmenopausal.
- Of the 72 pre/peri menopausal patients, 1 patient was never treated and 1 patient incorrectly randomised (postmenopausal as per investigator).

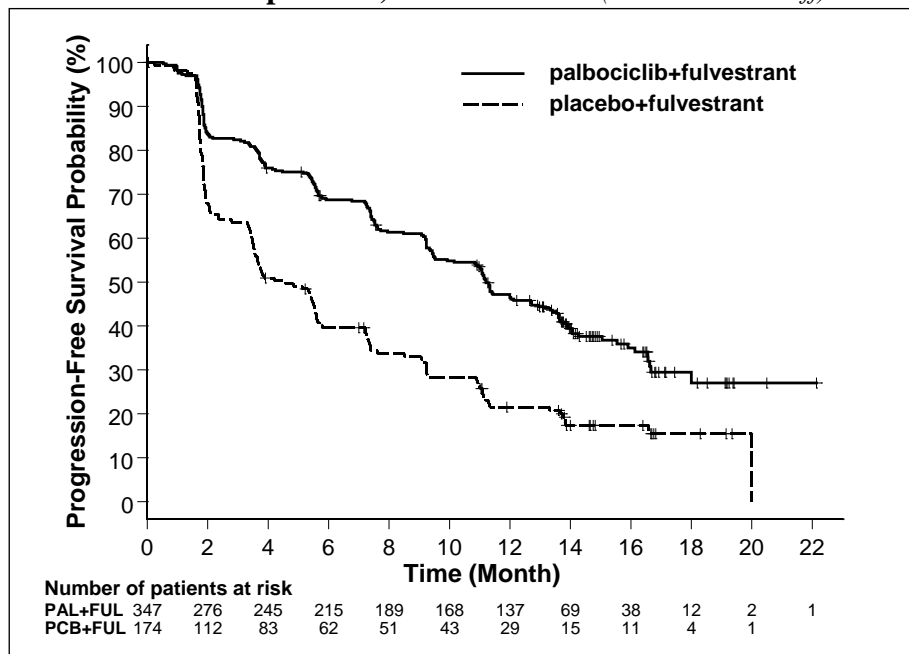
The primary endpoint of the study was investigator-assessed PFS evaluated according to RECIST version 1.1. Secondary PFS analyses were based on a random sample Blinded Independent Central Radiology Review (BICR) of 40.5% of the ITT population. Secondary

endpoints included OR, DOR, CBR, OS, safety, change in QoL and TTD. Patient-reported outcomes including Global QoL and pain were measured using the European Organisation for Research and Treatment of Cancer (EORTC) quality of life questionnaire (QLQ-C30) and the Breast Cancer Module (BR23) questionnaire.

The study met its primary endpoint of prolonging investigator-assessed PFS at the interim analysis conducted on 82% of the planned PFS events at final analysis; the results crossed the prespecified Haybittle-Peto efficacy boundary ( $\alpha=0.00135$ ), demonstrating a statistically significant prolongation in PFS and a clinically meaningful treatment effect. The estimated HR from the stratified analysis was 0.422 (95% CI: 0.318, 0.560; 1-sided  $p<0.000001$ ) in favour of palbociclib plus fulvestrant. The mPFS was 9.2 months (95% CI: 7.5-not estimable [NE]) in the palbociclib plus fulvestrant arm and 3.8 months (95% CI: 3.5-5.5) in the placebo plus fulvestrant arm.

A more mature update of efficacy data is reported in Figure 3 and Table 3.

**Figure 3. Kaplan-Meier Plot of Progression-Free Survival (Investigator Assessment, Intent-to-Treat Population) – PALOMA-3 (23-Oct-2015 Cutoff)**



CI=confidence interval; FUL=fulvestrant; N=number of patients; NE=not estimable; PAL=palbociclib; PCB=placebo; PFS=progression-free survival.

**Table 4. Efficacy Results – PALOMA-3 Study (Investigator Assessment, Intent-to-Treat Population)**

	Final Analysis (05-Dec-2014 Cutoff)		Updated Analysis (23-Oct-2015 Cutoff)	
	IBRANCE plus Fulvestrant (N = 347)	Placebo plus Fulvestrant (N = 174)	IBRANCE plus Fulvestrant (N = 347)	Placebo plus Fulvestrant (N = 174)
<b>Progression-Free Survival</b>				
Median PFS [months (95% CI)]	9.2 (7.5, NE)	3.8 (3.5, 5.5)	11.2 (9.5, 12.9)	4.6 (3.5, 5.6)
Hazard ratio [(95% CI) and p-value]	0.422 (0.318, 0.560), p<0.000001		0.497 (0.398, 0.620), p<0.000001	
<b>ORR [% (95% CI)]<sup>a</sup></b>	10.4 (7.4, 14.1)	6.3 (3.2, 11.0)	21.0 (16.9, 25.7)	8.6 (4.9, 13.8)
<b>ORR measurable disease [% (95% CI)]<sup>a</sup></b>	13.4 (9.6, 18.1)	8.0 (4.0, 13.8)	27.3 (22.1, 33.1)	10.9 (6.2, 17.3)
<b>DOR [months (95% CI)]<sup>a</sup></b>	9.3 (4.0, NE)	5.7 (3.7, 5.7)	10.4 (8.3, NE)	9.0 (5.6, NE)
<b>CBRR [% (95% CI)]<sup>a*</sup></b>	34.0 (29.0, 39.3)	19.0 (13.4, 25.6)	66.3 (61.0, 71.2)	39.7 (32.3, 47.3)

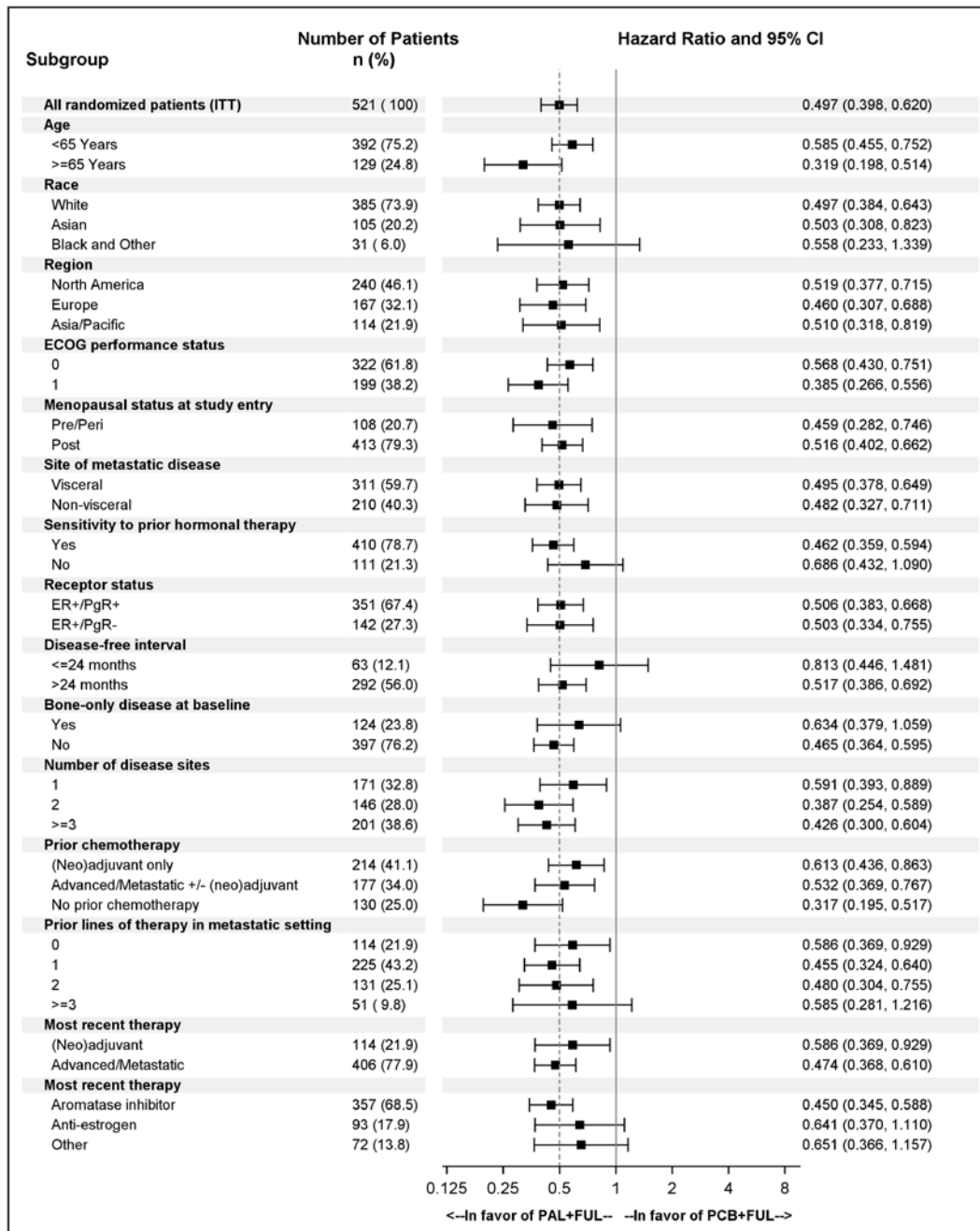
CBRR=clinical benefit response rate; CI=confidence interval; DOR=duration of response; N=number of patients; NE=not estimable; PFS=progression-free survival; ORR=objective response rate.

<sup>a</sup> Based on confirmed responses.

\*CBR includes complete response (CR), partial response (PR) and stable disease (SD)  $\geq$ 24 weeks. Of note, no CRs were reported in the palbociclib plus fulvestrant arm.

Prolongation of PFS in the palbociclib plus fulvestrant arm was also demonstrated in most individual patient subgroups supporting internal consistency of PFS benefit findings within the study and was supported by the secondary PFS random sample BICR audit.

**Figure 4. Forest Plot of Subgroup Analyses of Progression-Free Survival PALOMA-3 Study (Investigator Assessment, Intent-to-Treat Population) (23-Oct-2015 Cutoff)**



CI=confidence interval; ECOG=Eastern Cooperative Oncology Group; ER=oestrogen receptor; FUL=fulvestrant; ITT=intent-to-treat; n=number of patients meeting prespecified criteria; PAL=palbociclib; PCB=placebo; PgR=progesterone receptor.

As per inclusion criteria, pre/perimenopausal women were enrolled in the study if already treated with an LHRH agonist from at least 4 weeks. If they were not treated with goserelin prior to study entry, they were switched to goserelin when they started the study treatment. In the palbociclib plus fulvestrant arm 70 pre/perimenopausal women received goserelin for the duration of the study and in the placebo plus fulvestrant arm 36 pre/perimenopausal women received goserelin.

The palbociclib plus fulvestrant arm demonstrated similar clinical benefit in the pre/perimenopausal patient population (HR = 0.494 [95% CI: 0.300, 0.813]) and postmenopausal population (HR = 0.508 [95% CI: 0.395, 0.652]). Similarly, the mPFS for the palbociclib plus fulvestrant arm was 11.3 months (95% CI: 7.5, 15.0) in the pre/perimenopausal setting versus 11.2 months (95% CI: 9.5, 12.7) in the postmenopausal setting; while the mPFS in the placebo plus fulvestrant arm was 5.6 months (95% CI: 1.7, 9.2) in the pre/perimenopausal setting versus 3.9 months (95% CI: 3.5, 5.5) in the postmenopausal setting.

The overall survival (OS) data were not mature at the time of the final PFS analysis (11% of patients had died). Patients will continue to be followed for the final analysis.

Patient-reported symptoms were assessed using the EORTC QLQ-C30 and EORTC QLQ-BR23. A total of 335 patients in the palbociclib plus fulvestrant arm and 166 patients in the placebo plus fulvestrant arm completed the questionnaire at baseline and at least 1 postbaseline visit.

Time to Deterioration (TTD) was prespecified as time between baseline and first occurrence of  $\geq 10$ -point increase from baseline in pain symptom scores. Addition of palbociclib to fulvestrant resulted in a symptom benefit by significantly delaying TTD in pain symptom scores compared with placebo plus fulvestrant (median 8.0 months versus 2.8 months; HR of 0.64 [95% CI: 0.49, 0.85];  $p < 0.001$ ).

Men were not enrolled in PALOMA-1, PALOMA-2 and PALOMA-3.

## **INDICATIONS**

IBRANCE is indicated for the treatment of hormone receptor (HR)-positive, human epidermal growth factor receptor 2 (HER2)-negative advanced or metastatic breast cancer in combination with:

- an aromatase inhibitor as initial endocrine-based therapy
- fulvestrant in patients who have received prior therapy.

## **CONTRAINDICATIONS**

Use of IBRANCE is contraindicated in patients with hypersensitivity to palbociclib or to any of the excipients.

## **PRECAUTIONS**

### **Myelosuppression**

#### ***Neutropenia***

Decreased neutrophil counts have been observed very commonly in clinical studies with IBRANCE. In patients receiving IBRANCE in combination with letrozole (PALOMA-1 and PALOMA-2) and in combination with fulvestrant (PALOMA-3), Grade 3 (ANC  $500 < 1000/\text{mm}^3$ ) and Grade 4 (ANC  $< 500/\text{mm}^3$ ) decreased neutrophil counts were reported in 56.1% and 10.6% of patients respectively (see ADVERSE EFFECTS).

In PALOMA-1 and PALOMA-2 the median time to first episode of any grade neutropenia was 15 days (range 12-700 days) and 28 days (range 12-854) for Grade  $\geq 3$  neutropenia. The median duration of Grade  $\geq 3$  neutropenia was 33 days (range 1-534).

In PALOMA-3 the median time to first episode of neutropenia was 15 days (13-317 days) for any grade and 16 days (range 13-587) for Grade  $\geq 3$  neutropenia. The median duration for Grade  $\geq 3$  neutropenia was 21 days (range 1-167).

An increase in palbociclib exposure has been associated with more severe neutropenia; in Asian subjects, frequency of grade  $\geq 3$  neutropenia is higher than in White subjects (see PHARMACOLOGY – Pharmacokinetics, Special Populations – *Asian race*).

Febrile neutropenia has been reported in 1.6% of patients receiving palbociclib in combination with letrozole in PALOMA-2 and in 0.9% of patients receiving palbociclib in combination with fulvestrant in PALOMA-3. One death due to neutropenic sepsis was reported in PALOMA-3.

Febrile neutropenia has not been reported in PALOMA-1. Febrile neutropenia has been reported in about 2% of patients exposed to IBRANCE across the overall clinical program (see PRECAUTIONS – Infections).

Monitor complete blood count prior to the start of IBRANCE therapy and at the beginning of each cycle, as well as on Day 15 of the first 2 cycles, and as clinically indicated.

Dosing interruption, dose reduction or delay in starting treatment cycles is recommended for patients who develop Grade 3 or 4 neutropenia. Appropriate monitoring should be performed (see DOSAGE AND ADMINISTRATION).

### ***Anaemia***

Anaemia has been observed very commonly in clinical studies with IBRANCE. In patients receiving IBRANCE in combination with letrozole (PALOMA-1 and PALOMA-2) and in combination with fulvestrant (PALOMA-3), Grade 3 and Grade 4 anaemia was observed in 4.8% and 0% of patients respectively (see ADVERSE EFFECTS).

In PALOMA-1 and PALOMA-2 the median time to first episode of any grade anaemia was 29 days (range 1-777 days) and 195 days (range 14-760) for Grade  $\geq 3$  anaemia. The median duration of Grade  $\geq 3$  anaemia was 7 days (range 1-125). In PALOMA-3 the median time to first episode of anaemia was 25 days (12-378 days) for any grade and 52 days (range 15-363) for Grade  $\geq 3$  anaemia. The median duration for Grade  $\geq 3$  anaemia was 7 days (range 1-125). Across both studies, supportive treatment with red blood cell growth factors and transfusions was administered in 2.4% and 1.7%, respectively, on the palbociclib arms, and in 0.4% and 0%, respectively on the comparator arms.

### ***Thrombocytopenia***

Thrombocytopenia has been observed very commonly in clinical studies with IBRANCE. In patients receiving IBRANCE in combination with letrozole (PALOMA-1 and PALOMA-2) and in combination with fulvestrant (PALOMA-3), Grade 3 and Grade 4 thrombocytopenia was observed in 1.6% and 0.6% of patients, respectively (see ADVERSE EFFECTS).

In PALOMA-1 and PALOMA-2 the median time to first episode of any grade thrombocytopenia was 27 days (range 2-875 days) and 256 days (range 21-652 days) for

Grade  $\geq 3$  thrombocytopenia. The median duration of Grade  $\geq 3$  thrombocytopenia was 7 days (range 1-28 days). In PALOMA-3 the median time to first episode of thrombocytopenia was 15 days (13-422 days) for any grade and 23 days (range 15-57) for Grade  $\geq 3$  thrombocytopenia. The median duration for Grade  $\geq 3$  thrombocytopenia was 7 days (range 1-9 days).

## **Infections**

Since IBRANCE has myelosuppressive properties, it may predispose to infections.

Infections of any grade have been reported at a higher rate in patients treated with IBRANCE. Infections of any grade occurred in 59.6% of patients treated with IBRANCE and letrozole in PALOMA-1 and PALOMA-2 compared to 40.1% of patients treated in the comparator arm. Infections of any grade occurred in 47.2% of patients treated with IBRANCE and fulvestrant in PALOMA-3, compared to 31.4% of patients treated in the comparator arm.

Grade 3 and 4 infections occurred in 6.5% of patients treated with IBRANCE and letrozole in PALOMA-1 and PALOMA-2 compared to 2.3% of patients treated in the comparator arm. Grade 3 and 4 infections occurred in 3.2% of patients treated with IBRANCE in PALOMA-3 compared to 2.9% of patients treated in the comparator arm.

Monitor patients for signs and symptoms of infection and treat as medically appropriate (see ADVERSE EFFECTS).

Physicians should inform patients to immediately report any episodes of fever.

## **Effects on Fertility**

Palbociclib did not affect oestrous cycling, mating or fertility in female rats at any dose tested up to 300 mg/kg/day (approximately 3 times human clinical exposure based on AUC). However, no clinical data have been obtained on fertility in human females. Based on nonclinical safety findings, male fertility may be compromised by treatment with IBRANCE. Men should consider sperm preservation prior to beginning therapy with IBRANCE.

Palbociclib is considered to have the potential to impair reproductive function and fertility in male humans based on nonclinical findings in rats and dogs. Palbociclib-related findings in the testis, epididymis, prostate and seminal vesicle included decreased organ weight, atrophy or degeneration, hypospermia, intratubular cellular debris, lower sperm motility and density, and decreased secretion. These findings were observed in rats and/or dogs at exposures  $\geq 6$  times or subtherapeutic compared to human clinical exposure based on AUC, respectively. The effects appeared to be reversible.

## **Use in Pregnancy Pregnancy Category D**

There are no adequate and well-controlled studies in pregnant women receiving IBRANCE. Based on findings in animals and mechanism of action, palbociclib can cause fetal harm when administered to a pregnant woman.

Women of childbearing potential should be advised to avoid becoming pregnant while receiving IBRANCE. Women of childbearing potential who are receiving this drug should use adequate contraceptive methods during therapy and for at least a month after completing therapy. Partners of females of childbearing potential receiving this drug should use adequate contraception methods during therapy and for at least 14 weeks after completing therapy.



Palbociclib was fetotoxic in pregnant rats and rabbits. Reduced fetal body weights were observed at a maternally toxic dose of 300 mg/kg/day in rats (3 times human clinical exposure based on AUC) and an increased incidence of skeletal variations, including small phalanges in the forelimb, was observed at a maternally toxic dose of 20 mg/kg/day in rabbits (6 times human clinical exposure based on AUC). An increased incidence of a skeletal variation (increased incidence of a rib present at the seventh cervical vertebra) at  $\geq 100$  mg/kg/day (equivalent to human clinical exposure based on AUC) was seen in rats while other skeletal variations and skeletal ossification were seen in rabbits at  $\geq 10$  mg/kg/day (3 times human clinical exposure based on AUC). Actual fetal exposure and cross-placenta transfer have not been examined.

CDK4/6 double knockout mice have been reported to die in late stages of fetal development due to severe anaemia. However, knockout mouse data may not be predictive of effects in humans due to differences in degree of target inhibition.

Female patients taking palbociclib during pregnancy or who become pregnant while taking palbociclib should be apprised of the potential hazard to the fetus.

### **Use in Lactation**

No studies have been conducted in humans to assess the effect of IBRANCE on milk production, its presence in breast milk or its effects on the breast-fed child. It is unknown whether palbociclib is excreted in human milk. Patients receiving IBRANCE should not breast-feed.

### **Paediatric Use**

The safety and efficacy of IBRANCE in paediatric patients have not been studied.

### **Use in the Elderly**

See PHARMACOLOGY – Pharmacokinetics – *Elderly* ( $\geq 65$  years) and DOSAGE AND ADMINISTRATION – Dosage Adjustment in the Elderly..

### **Use in Renal Impairment**

See PHARMACOLOGY – Pharmacokinetics – *Renal Impairment* and DOSAGE AND ADMINISTRATION – Dosage Adjustment in Renal Impairment.

### **Use in Hepatic Impairment**

See PHARMACOLOGY – Pharmacokinetics – *Hepatic Impairment* and DOSAGE AND ADMINISTRATION – Dosage Adjustment in Hepatic Impairment.

### **Preclinical Safety**

The primary target organ findings following single and/or repeat dosing included haematolymphopoietic and male reproductive organ effects in rats and dogs, and effects on bone and actively growing incisors in rats only. These systemic toxicities were generally observed at clinically relevant exposures based on AUC. Partial to full reversal of effects on the haematolymphopoietic, male reproductive systems and incisor teeth were established, whereas the bone effect was not reversed following a 12-week nondosing period. The effect on bone indicate a potential risk for children and adolescents. In addition, cardiovascular effects (QTc prolongation, decreased heart rate and increased RR interval and systolic blood

pressure) were identified in telemetered dogs at  $\geq 4$  times human clinical exposure based on  $C_{max}$ .

### **Genotoxicity**

Palbociclib was not mutagenic in a bacterial reverse mutation (Ames) assay and did not induce structural chromosomal aberrations in the in vitro human lymphocyte chromosome aberration assay.

Palbociclib induced micronuclei via an aneugenic mechanism in Chinese Hamster Ovary cells in vitro and in the bone marrow of rats.

### **Carcinogenicity**

Carcinogenicity studies have not been conducted with palbociclib.

### **Effects on Ability to Drive and Use of Machines**

No studies on the effects of IBRANCE on the ability to drive or operate machinery have been conducted. However, patients experiencing fatigue while taking IBRANCE should exercise caution when driving or operating machinery.

## **INTERACTIONS WITH OTHER MEDICINES**

Palbociclib is primarily metabolised by CYP3A and sulfotransferase (SULT) enzyme SULT2A1. In vivo, palbociclib is a time-dependent inhibitor of CYP3A.

### **Agents that may increase palbociclib plasma concentrations**

#### ***Effect of CYP3A inhibitors***

Data from a drug-drug interaction (DDI) study in healthy subjects indicate that coadministration of multiple 200 mg doses of itraconazole with a single 125 mg dose of IBRANCE increased palbociclib total exposure (area under the curve,  $AUC_{inf}$ ) and the maximum observed plasma concentration ( $C_{max}$ ) by approximately 87% and 34%, respectively, relative to a single 125 mg dose of IBRANCE given alone. The concomitant use of strong CYP3A inhibitors including, but not limited to, amprenavir, atazanavir, boceprevir, clarithromycin, conivaptan, delavirdine, diltiazem, erythromycin, fosamprenavir, indinavir, itraconazole, ketoconazole, lopinavir, mibefradil, miconazole, nefazodone, nelfinavir, posaconazole, ritonavir, saquinavir, telithromycin, voriconazole and grapefruit or grapefruit juice should be avoided.

### **Agents that may decrease palbociclib plasma concentrations**

#### ***Effect of CYP3A inducers***

Data from a DDI study in healthy subjects indicate that coadministration of multiple 600 mg doses of rifampin, a strong CYP3A inducer, with a single 125 mg dose of IBRANCE decreased palbociclib  $AUC_{inf}$  and  $C_{max}$  by 85% and 70%, respectively, relative to a single 125 mg dose of IBRANCE given alone. Data from a DDI study in healthy subjects indicate that coadministration of multiple 400 mg daily doses of modafinil, a moderate CYP3A inducer, with a single 125 mg IBRANCE dose decreased palbociclib  $AUC_{inf}$  and  $C_{max}$  by 32% and 11%, respectively, relative to a single 125 mg dose of given alone.

The concomitant use of strong CYP3A inducers including, but not limited to, carbamazepine, enzalutamide, felbamate, nevirapine, phenobarbital, phenytoin, primidone, rifabutin, rifampin, rifapentin and St. John's wort should be avoided.

Coadministration of a moderate CYP3A inducer (modafinil) decreased the plasma exposure of palbociclib in healthy subjects by 32%. Moderate CYP3A inducers (e.g., bosentan, efavirenz, etravirine, modafinil and nafcillin) can be used concurrently with IBRANCE when unavoidable. No dosing adjustments are required.

### **Effect of acid reducing agents**

Data from a DDI study in healthy subjects indicated that coadministration of a single 125 mg dose of IBRANCE with multiple doses of the proton pump inhibitor (PPI) rabeprazole under fed conditions decreased palbociclib  $C_{max}$  by 41%, but had limited impact on  $AUC_{inf}$  (13% decrease) compared with a single 125 mg dose of IBRANCE administered alone.

Given the reduced effect on gastric pH of H<sub>2</sub>-receptor antagonists and local antacids compared to PPIs under fed conditions, there is no clinically relevant effect of PPIs, H<sub>2</sub>-receptor antagonists or local antacids on palbociclib exposure.

Data from another DDI study in healthy subjects indicated that coadministration of a single dose of IBRANCE with multiple doses of the PPI rabeprazole under fasted conditions decreased palbociclib  $AUC_{inf}$  and  $C_{max}$  by 62% and 80%, respectively, when compared with a single dose of IBRANCE administered alone.

Therefore, IBRANCE should be taken with food (see DOSAGE AND ADMINISTRATION).

### **Effects of IBRANCE on other drugs**

Palbociclib is a weak time-dependent inhibitor of CYP3A following daily 125 mg dosing at steady state in humans. In a DDI study in healthy subjects, coadministration of midazolam with multiple doses of palbociclib increased the midazolam  $AUC_{inf}$  and  $C_{max}$  values by 61% and 37%, respectively, as compared with administration of midazolam alone.

In vitro, palbociclib is not an inhibitor of CYP1A2, 2A6, 2B6, 2C8, 2C9, 2C19 or 2D6 and is not an inducer of CYP1A2, 2B6, 2C8 or 3A4 at clinically relevant concentrations.

#### ***Letrozole***

Data from a clinical study in patients with breast cancer showed that there was no drug interaction between palbociclib and letrozole when the 2 drugs were coadministered.

#### ***Fulvestrant***

Data from a clinical study in patients with breast cancer showed that there was no clinically relevant drug interaction between palbociclib and fulvestrant when the 2 drugs were coadministered.

#### ***Goserelin***

Data from a clinical study in patients with breast cancer showed that there was no clinically relevant drug interaction between palbociclib and goserelin when the 2 drugs were coadministered.

### **In vitro studies with transporters**

In vitro evaluations indicate that palbociclib has a low potential to inhibit the activities of drug transporters P-glycoprotein (P-gp, systemically), breast cancer resistance protein (BCRP, systemically), organic anion transporter (OAT)1, OAT3, organic cation transporter (OCT)2, organic anion transporting polypeptide (OATP)1B1, OATP1B3 and bile salt export pump (BSEP) at clinically relevant concentrations. Based on in vitro data, palbociclib has the potential to inhibit OCT1 at clinically relevant concentrations, as well as the potential to inhibit P-gp or BCRP in the gastrointestinal tract at the proposed clinical dose. Based on in vitro data, palbociclib was a weak substrate for P-gp and a moderate substrate for BCRP; however, P-gp and BCRP mediated transport are unlikely to significantly affect the extent of oral absorption of palbociclib at therapeutic doses.

### **ADVERSE EFFECTS**

The overall safety profile of IBRANCE is based on pooled data from 872 patients who received palbociclib in combination with endocrine therapy (N=527 in combination with letrozole and N=345 in combination with fulvestrant) in randomised clinical studies in HR-positive, HER2-negative advanced or metastatic breast cancer.

#### **PALOMA-1 and PALOMA-2: Patients treated with the combination IBRANCE plus letrozole**

The safety profile of IBRANCE (125 mg/day) in combination with letrozole (2.5 mg/day) versus the comparator arm is based on data from PALOMA-1 and PALOMA-2. Table 5 below shows the adverse reactions observed in 527 patients with HR-positive, HER2-negative advanced breast cancer who received at least 1 dose of IBRANCE plus letrozole in PALOMA-1 and PALOMA-2.

**Table 5. Adverse Drug Reactions Reported for Patients Who Received Palbociclib Plus Letrozole or Letrozole Alone or Placebo Plus Letrozole in PALOMA-1 and PALOMA-2 (26-Feb-2016 Cutoff)**

System Organ Class Preferred Term <sup>a</sup>	Palbociclib Plus Letrozole (N=527)			Letrozole Alone or Placebo plus Letrozole (N=299)		
	All Grades %	Grade 3 %	Grade 4 %	All Grades %	Grade 3 %	Grade 4 %
<b>Infections and infestations</b>						
Infections <sup>b</sup>	59.6 <sup>c</sup>	5.7	0.8	40.1	2.3	0
<b>Blood and lymphatic system disorders</b>						
Neutropenia <sup>d</sup>	78.9	55.2	9.7	6.0	1.0	0.3
Leukopenia <sup>c</sup>	40.0	23.7	0.6	2.7	0	0
Anaemia <sup>f</sup>	26.4	4.9	0.4	9.4	0	0
Thrombocytopenia <sup>g</sup>	16.7	1.5	0.2	1.7	0.3	0
Febrile neutropenia	2.1	1.3	0.2			
<b>Eye disorders</b>						
Blurred vision	3.4	0.2	0	2.0	0	0
Increased lacrimation	5.3	0	0	0.7	0	0
Dry eye	3.4	0	0	2.7	0	0
<b>Metabolism and nutrition disorders</b>						
Decreased appetite	15.7	0.8	0	8.4	2.0	0
<b>Nervous system disorders</b>						
Dysgeusia	9.7	0	0	3.7	0	0
<b>Respiratory, thoracic and mediastinal disorders</b>						
Epistaxis	9.5	0	0	5.0	0	0

System Organ Class Preferred Term <sup>a</sup>	Palbociclib Plus Letrozole (N=527)			Letrozole Alone or Placebo plus Letrozole (N=299)		
	All Grades %	Grade 3 %	Grade 4 %	All Grades %	Grade 3 %	Grade 4 %
<b>Gastrointestinal disorders</b>						
Stomatitis <sup>h</sup>	29.4	0.8	0	11.7	0	0
Nausea	34.3	0.6	0	23.1	1.7	0
Diarrhoea	25.2	1.7	0	17.4	1.0	0
Vomiting	15.9	0.4	0	13.4	1.3	0
<b>Skin and subcutaneous tissue disorders</b>						
Alopecia	31.1 <sup>i</sup>	0	0	12.4	0	0
Rash <sup>k</sup>	16.3	0.8	0	10.7	0.3	0
Dry skin	11.6	0	0	5.7	0	0
<b>General disorders and administration site conditions</b>						
Fatigue	38.0	2.3	0.4	26.4	0.7	0
Asthenia	16.3	2.3	0	10.0	0.3	0
Pyrexia	12.1	0	0	6.7	0	0
<b>Investigations</b>						
ALT increased <sup>l</sup>	9.5	1.7	0.2	3.0	0	0
AST increased <sup>m</sup>	9.3	2.3	0	3.7	0.7	0

N=number of patients.

Grades determined by National Cancer Institute Common Terminology Criteria for Adverse Events 4.0.

- Preferred Terms (PTs) are listed according to MedDRA 19.0.
- INFECTIONS include all reported PTs that are part of the System Organ Class Infections and infestations.
- Most common infections ( $\geq 1\%$ ) include: Nasopharyngitis, Upper respiratory tract infection, Urinary tract infection, Oral herpes, Sinusitis, Rhinitis, Bronchitis, Influenza, Pneumonia, Gastroenteritis, Conjunctivitis, Herpes zoster, Pharyngitis, Cellulitis, Cystitis, Lower respiratory tract infection, Tooth infection, Gingivitis, Skin infection, Gastroenteritis viral, Respiratory tract infection, Respiratory tract infection viral, Folliculitis.
- NEUTROPENIA includes the following PTs: Neutropenia, Neutrophil count decreased.
- LEUKOPENIA includes the following PTs: Leukopenia, White blood cell count decreased.
- ANAEMIA includes the following PTs: Anaemia, Haemoglobin decreased, Haematocrit decreased.
- THROMBOCYTOPENIA includes the following PTs: Thrombocytopenia, Platelet count decreased.
- STOMATITIS includes the following PTs: Aphthous stomatitis, Cheilitis, Glossitis, Glossodynia, Mouth ulceration, Mucosal inflammation, Oral pain, Oropharyngeal discomfort, Oropharyngeal pain, Stomatitis.
- Grade 1 events – 30%; Grade 2 events – 3%.
- Grade 1 events – 15%; Grade 2 events – 1%.
- RASH includes the following: Rash, Rash maculo-papular, Rash pruritic, Rash erythematous, Rash papular, Dermatitis, Dermatitis acneiform, Toxic skin eruption.
- Alanine aminotransferase
- Aspartate aminotransferase

**Table 6. Laboratory Abnormalities in PALOMA-2 Study (26-Feb-2016 Cutoff)**

Laboratory Abnormality	IBRANCE plus Letrozole (N = 444)			Placebo plus Letrozole (N = 222)		
	All Grades %	Grade 3 %	Grade 4 %	All Grades %	Grade 3 %	Grade 4 %
WBC decreased	97	35	1	25	1	0
Neutrophils decreased	95	56	12	20	1	1
Anaemia	78	6	0	42	2	0
Platelets decreased	63	1	1	14	0	0
ALT increased	43	2	<1	30	0	0
AST increased	52	3	0	34	1	0

N=number of patients; WBC=white blood cells; ALT=Alanine aminotransferase; AST=Aspartate aminotransferase.

The most common adverse reactions ( $\geq 20\%$ ) of any grade reported in patients in the IBRANCE plus letrozole arm by descending frequency were neutropenia, infections, leukopenia, nausea, fatigue, alopecia, stomatitis, anaemia and diarrhoea.

Dose reductions due to an adverse event of any grade occurred in 36.2% of patients receiving IBRANCE plus letrozole in PALOMA-1 and PALOMA-2. No dose reductions were allowed for the comparator arm. Permanent treatment discontinuation associated with an adverse event occurred in 10.6% patients receiving IBRANCE plus letrozole in PALOMA-1 and PALOMA-2 and in 5.0% of patients in the comparator arm.

In PALOMA-2 patients receiving IBRANCE plus letrozole, the starting dose of IBRANCE was 125 mg once daily. Dose reductions to 100 mg occurred in 36% of patients and dose reductions to 75 mg occurred in 14% of patients due to adverse events.

Neutropenia of any grade was reported in 78.9% of patients receiving IBRANCE plus letrozole in PALOMA 1 and PALOMA-2, with Grade 3 neutropenia reported in 55.2% of patients and Grade 4 neutropenia reported in 9.7% of patients (see PRECAUTIONS).

The most frequently reported Grade >3 adverse reactions ( $\geq 5\%$ ) in patients receiving IBRANCE plus letrozole by descending frequency were neutropenia, leukopenia, infections and anaemia.

The most frequently ( $\geq 1\%$ ) reported serious adverse drug reactions in patients receiving palbociclib plus letrozole (PALOMA-1 and PALOMA-2) were infections (4.6%) and febrile neutropenia (1.3%).

Cataract was reported in 3.2% of patients receiving IBRANCE plus letrozole and in 0.5% of patients receiving placebo plus letrozole in PALOMA-2.

### **PALOMA-3: Patients treated with the combination IBRANCE plus fulvestrant**

The safety of IBRANCE (125 mg/day) plus fulvestrant (500 mg) versus placebo plus fulvestrant was evaluated in PALOMA-3. Table 7 below shows the adverse reaction in patients with HR-positive, HER2-negative advanced or metastatic breast cancer who received at least 1 dose of IBRANCE plus fulvestrant.

**Table 7. Adverse Drug Reactions Reported for Patients Who Received Palbociclib Plus Fulvestrant or Placebo Plus Fulvestrant in PALOMA-3 Study (31-Jul-2015 Cutoff)**

System Organ Class  Preferred Term <sup>a</sup>	Palbociclib Plus Fulvestrant (N=345)			Placebo Plus Fulvestrant (N=172)		
	All Grades %	Grade 3 %	Grade 4 %	All Grades %	Grade 3 %	Grade 4 %
<b>Infections and infestations</b>						
Infections <sup>b</sup>	47.2 <sup>c</sup>	2.6	0.6	31.4	2.9	0
<b>Blood and lymphatic system disorders</b>						
Febrile neutropenia	0.9	0.9	0	0.6	0	0.6
Neutropenia <sup>d</sup>	83.2	55.4	10.7	4.1	0.6	0
Leukopenia <sup>e</sup>	53.0	29.9	0.6	5.2	0.6	0.6
Anaemia <sup>f</sup>	29.6	3.5	0	12.8	1.7	0
Thrombocytopenia <sup>g</sup>	22.6	1.7	0.6	0	0	0
<b>Eye disorders</b>						
Blurred vision	5.8	0	0	1.7	0	0
Increased lacrimation	6.4	0	0	1.2	0	0
Dry eye	3.8	0	0	1.7	0	0
<b>Metabolism and nutrition disorders</b>						
Decreased appetite	15.9	0.9	0	8.1	0.6	0
<b>Nervous system disorders</b>						
Dysgeusia	6.7	0	0	2.9	0	0

System Organ Class  Preferred Term <sup>a</sup>	Palbociclib Plus Fulvestrant (N=345)			Placebo Plus Fulvestrant (N=172)		
	All Grades %	Grade 3 %	Grade 4 %	All Grades %	Grade 3 %	Grade 4 %
<b>Respiratory, thoracic and mediastinal disorders</b>						
Epistaxis	6.7	0	0	1.7	0	0
<b>Gastrointestinal disorders</b>						
Stomatitis <sup>h</sup>	28.1	0.6	0	12.8	0	0
Nausea	33.9	0	0	27.9	0.6	0
Diarrhoea	23.5	0	0	19.2	1.2	0
Vomiting	18.8	0.6	0	15.1	0.6	0
<b>Skin and subcutaneous tissue disorders</b>						
Alopecia	18.0	0	0	6.4	0	0
Rash <sup>i</sup>	16.8	0.6	0	6.4	0	0
Dry skin	6.1	0	0	1.2	0	0
<b>General disorders and administration site conditions</b>						
Fatigue	41.2	2.3	0	29.1	1.2	0
Asthenia	7.5	0	0	5.2	0.6	0
Pyrexia	12.8	0.3	0	5.2	0	0
<b>Investigations</b>						
ALT increased	5.8	1.7	0	3.5	0	0
AST increased	7.5	2.9	0	5.2	1.7	0

N=number of patients; ALT= Alanine aminotransferase; AST= Aspartate aminotransferase.

Grades determined by National Cancer Institute Common Terminology Criteria for Adverse Events 4.0.

- Preferred Terms (PTs) are listed according to MedDRA 19.0.
- INFECTIONS includes all reported PTs that are part of the System Organ Class Infections and infestations.
- Most common infections ( $\geq 1\%$ ) include: Nasopharyngitis, Upper respiratory tract infection, Urinary tract infection, Bronchitis, Rhinitis, Influenza, Conjunctivitis, Sinusitis, Pneumonia, Cystitis, Oral herpes, Respiratory tract infection, Gastroenteritis, Tooth infection, Pharyngitis, Eye infection, Herpes simplex, Paronychia.
- NEUTROPENIA includes the following PTs: Neutropenia, Neutrophil count decreased.
- LEUKOPENIA includes the following PTs: Leukopenia, White blood cell count decreased.
- ANAEMIA includes the following PTs: Anaemia, Haemoglobin decreased, Haematocrit decreased.
- THROMBOCYTOPENIA includes the following PTs: Thrombocytopenia, Platelet count decreased.
- STOMATITIS includes the following PTs: Aphthous stomatitis, Cheilitis, Glossitis, Glossodynia, Mouth ulceration, Mucosal inflammation, Oral pain, Oropharyngeal discomfort, Oropharyngeal pain, Stomatitis.
- RASH includes the following PTs: Rash, Rash maculo-papular, Rash pruritic, Rash erythematous, Rash papular, Dermatitis, Dermatitis acneiform, Toxic skin eruption.

**Table 8. Laboratory Abnormalities in PALOMA-3 Study (31-Jul-2015 Cutoff)**

Laboratory Abnormality	IBRANCE plus Fulvestrant (N=345)			Placebo plus Fulvestrant (N=172)		
	All Grades %	Grade 3 %	Grade 4 %	All Grades %	Grade 3 %	Grade 4 %
WBC decreased	99	45	1	26	0	1
Neutrophils decreased	96	56	11	14	0	1
Anaemia	78	3	0	40	2	0
Platelets decreased	62	2	1	10	0	0
ALT increased	36	2	0	34	0	0
AST increased	43	4	0	48	4	0

N=number of patients; WBC=white blood cells; ALT=Alanine aminotransferase; AST=Aspartate aminotransferase.

The most common adverse drug reactions of any grade reported in >20% of patients receiving palbociclib in combination with fulvestrant were neutropenia, leukopenia, infections, fatigue, nausea, anaemia, stomatitis, diarrhoea and thrombocytopenia.

Dose reductions due to an adverse event of any grade occurred in 35.9% of patients receiving IBRANCE plus fulvestrant. No dose reduction was allowed for fulvestrant in PALOMA-3. Permanent treatment discontinuation associated with an adverse event occurred in 5.5% of patients receiving IBRANCE plus fulvestrant and in 3.5% of patients receiving placebo plus fulvestrant.

In PALOMA-3 patients receiving IBRANCE plus fulvestrant, the starting dose of IBRANCE was 125 mg once daily. Dose reductions to 100 mg occurred in 34% of patients and dose reductions to 75 mg occurred in 12% of patients due to adverse events.

Neutropenia of any grade was reported in 83.2% of patients receiving IBRANCE in combination with fulvestrant in PALOMA-3, with Grade 3 neutropenia being reported in 55.4% of patients and Grade 4 neutropenia being reported in 10.7% of patients (see PRECAUTIONS).

The most frequently ( $\geq 1\%$ ) reported serious adverse drug reactions in patients receiving palbociclib plus fulvestrant (PALOMA-3) were infections (4.1%), pyrexia (1.4%) and neutropenia (1.2%).

## **DOSAGE AND ADMINISTRATION**

The recommended dose of IBRANCE is a 125 mg capsule taken orally once daily for 21 consecutive days followed by 7 days off treatment (Schedule 3/1) to comprise a complete cycle of 28 days.

When coadministered with palbociclib, the recommended dose of letrozole is 2.5 mg taken orally once daily continuously throughout the 28-day cycle. Please refer to the Product Information for letrozole.

When coadministered with palbociclib, the recommended dose of fulvestrant is 500 mg administered intramuscularly on Days 1, 15, 29 and once monthly thereafter. Please refer to the Product Information for fulvestrant.

IBRANCE should be taken with food.

Patients should be encouraged to take their dose at approximately the same time each day. Continue the treatment as long as the patient is deriving clinical benefit from therapy.

If the patient vomits or misses a dose, an additional dose should not be taken. The next prescribed dose should be taken at the usual time. IBRANCE capsules should be swallowed whole (do not chew, crush or open them prior to swallowing). No capsule should be ingested if it is broken, cracked or otherwise not intact.

Prior to the start of, and throughout treatment with palbociclib plus an aromatase inhibitor or palbociclib plus fulvestrant, pre/perimenopausal women should be treated with luteinizing hormone-releasing hormone (LHRH) agonists according to local clinical practice. Pre- and perimenopausal women were not enrolled in PALOMA-1 and PALOMA-2.

Monitor complete blood count prior to the start of IBRANCE therapy and at the beginning of each cycle, as well as on Day 15 of the first 2 cycles, and as clinically indicated.



## Dose Modifications

Dose modification of IBRANCE is recommended based on individual safety and tolerability.

Management of some adverse reactions may require temporary dose interruptions/delays and/or dose reductions or permanent discontinuation as per dose reduction schedules provided in Tables 9, 10 and 11 (see PRECAUTIONS and ADVERSE EFFECTS)

**Table 9. IBRANCE Recommended Dose Modifications for Adverse Events**

Dose Level	Dose
Recommended dose	125 mg/day
First dose reduction	100 mg/day
Second dose reduction	75 mg/day*

\*If further dose reduction below 75 mg/day is required, discontinue the treatment.

**Table 10. IBRANCE Dose Modification and Management – Haematologic Toxicities<sup>a</sup>**

CTCAE Grade	Dose Modifications
Grade 1 or 2	No dose adjustment is required.
Grade 3	Day 1 of cycle: Withhold IBRANCE, repeat complete blood count monitoring within 1 week. When recovered to Grade $\leq 2$ , start the next cycle at the <i>same dose</i>  Day 15 of first 2 cycles: Continue IBRANCE at current dose to complete cycle. Repeat complete blood count on Day 22.  Consider dose reduction in cases of prolonged (>1 week) recovery from Grade 3 or recurrent Grade 3 neutropenia, anaemia or thrombocytopenia in the subsequent cycles.
Grade 3 neutropenia <sup>b</sup> with fever $\geq 38.5^{\circ}\text{C}$ and/or infection	Withhold IBRANCE until recovery to Grade $\leq 2$ . Resume at the <i>next lower dose</i> .
Grade 4	Withhold IBRANCE until recovery to Grade $\leq 2$ . Resume at the <i>next lower dose</i> .

Grading according to CTCAE 4.0

ANC=absolute neutrophil count; CTCAE=Common Terminology Criteria for Adverse Events; LLN-lower limit of normal.

<sup>a</sup> Table applies to all haematologic adverse reactions except lymphopenia (unless associated with clinical events, e.g., opportunistic infections).

<sup>b</sup> ANC: Grade 1: ANC < LLN - 1500/mm<sup>3</sup>; Grade 2: ANC 1000 - <1500/mm<sup>3</sup>; Grade 3: ANC 500 - <1000/mm<sup>3</sup>; Grade 4: ANC <500/mm<sup>3</sup>.

**Table 11. IBRANCE Dose Modification and Management – Non-Haematologic Toxicities**

CTCAE Grade	Dose Modifications
Grade 1 or 2	No dose adjustment is required.
Grade $\geq 3$ non-haematologic toxicity (if persisting despite medical treatment)	Withhold until symptoms resolve to: Grade $\leq 1$ ; Grade $\leq 2$ (if not considered a safety risk for the patient) Resume at the <i>next lower dose</i> .

Grading according to CTCAE 4.0

CTCAE=Common Terminology Criteria for Adverse Events.

No dose modifications are required on the basis of patient's age, sex or body weight (see PHARMACOKINETICS).

### **Children and Adolescents**

The safety and efficacy of IBRANCE in children and adolescents  $\leq 18$  years of age have not been established.

### **Dosage Adjustment in Renal Impairment**

No dose adjustments are required for patients with mild to moderate renal impairment (creatinine clearance [CrCl]  $\geq 30$  mL/min). IBRANCE has not been studied in patients with severe renal impairment (CrCl  $< 30$  mL/min) or requiring haemodialysis (see PHARMACOLOGY – Pharmacokinetics – *Renal Impairment*).

### **Dosage Adjustment in Hepatic Impairment**

No dose adjustments are required for patients with mild hepatic impairment (total bilirubin  $\leq 1 \times$  upper limit of normal [ULN] and aspartate aminotransferase [AST]  $> 1 \times$  ULN or total bilirubin  $> 1.0$  to  $1.5 \times$  ULN and any AST). IBRANCE has not been studied in patients with moderate or severe hepatic impairment (total bilirubin  $> 1.5 \times$  ULN and any AST) (see PHARMACOLOGY – Pharmacokinetics – *Hepatic Impairment*).

### **Dosage Adjustment in the Elderly**

No dose adjustment is necessary in patients  $\geq 65$  years of age (see PHARMACOLOGY – Pharmacokinetics – *Elderly  $\geq 65$  years*).

## **OVERDOSAGE**

There is no known antidote for palbociclib. The treatment of IBRANCE overdose should consist of general supportive measures. For information on the management of overdose, contact the Poison Information Centre on 13 11 26.

## **PRESENTATION AND STORAGE CONDITIONS**

### **Presentation**

IBRANCE 75 mg: opaque, hard capsule, with a light orange body (printed "PBC 75" in white) and a light orange cap (printed "Pfizer" in white). Blister packs or bottles contain 21 capsules.

IBRANCE 100 mg: opaque, hard capsule, with a light orange body (printed "PBC 100" in white) and a caramel cap (printed "Pfizer" in white). Blister packs or bottles contain 21 capsules.

IBRANCE 125 mg: opaque, hard capsule, with a caramel body (printed "PBC 125" in white) and a caramel cap (printed "Pfizer" in white). Blister packs or bottles contain 21 capsules.

### **Storage Conditions**

Store below 30°C.

**NAME AND ADDRESS OF THE SPONSOR**

Pfizer Australia Pty Ltd  
ABN 5000 8422 348  
38-42 Wharf Road  
WEST RYDE NSW 2114

**POISON SCHEDULE OF THE MEDICINE**

S4 (Prescription Medicine)

**DATE OF FIRST INCLUSION IN THE AUSTRALIAN REGISTER OF THERAPEUTIC GOODS (THE ARGT)**

3 May 2017

® Registered trademark